

Robust, Reliable,
And Cutting Edge
Billing Support
with

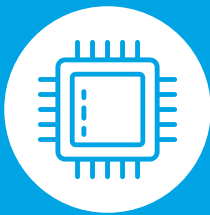
TP i415C K

Touch POS System

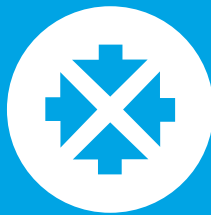
Powered by



7100U



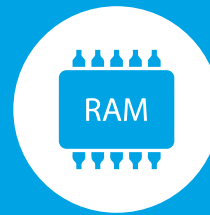
Intel® Core™ i3 7100U



Stylish & Compact
Design



Interface
(6 Serial, 6 USB)



4GB,DDR4
(Max 32 GB, Optional)

Ideal
for :



Restaurants



Retail



Grocery &
Departmental
Stores



Apparel Shops

TP i415C K

Touch POS System

TP i415C K		
System	Processor	Intel® Core™ i3 7100U
	Chipset/BIOS	Intel® Bay Trail SoC/AMI
	Storage	2.5" SSD 128GB
	Memory	4GB,DDR4 2133MHz X 2 Slot (Max 32 GB, Optional)
	Graphics	Intel® HD Graphics 520/ intel® HD Graphics 620
	Expansion Slot	1 X mini PCI-e
	Multi Monitor	3(# of displays Supported) (OPTIONAL)
	OS Support	Windows 10 IOT value/High End, POSReady 7 (OPTIONAL)
LCD Display	Type	15" LCD with WLED backlight
	Resolution	1024 X 768
	Touch	True- Flat Capacitive 10 Point Multi-Touch
I/O Interface	Serial	6(DB9 X 3,RJ50(RJ45) X 2,RJ11 X 1). COM1,3,5 (DB9): +5V on Pin #9,selectable by BIOS. COM2,4 (RJ50, RJ45): Support +5V and 12V for special Devices and can be used for kitchen printer. COM6 (RJ11): USB2.0 and RS232 with +5V /1A for Card Reader.
	USB	6 (2 X USB 3.0 Rear Top, 4 X USB 3.0 Rear Bottom)
	LPT (Parallel)	1(LPT/DB25 on Rear Bottom)
	Audio	1 X Audio-out/3.5mm(Changeable for MIC)
	Display port	1 X Displayport(Included 1X USB 2.0 / Power Delivery + 12V) * Can be used for HDMI and DVI,VGA Monitor by Converter Cable
	LAN	1 x RJ45(Base-T 10/100/1000 Ethernet)
Peripheral (Optional)	2nd Display	Type : 9.7" Display Resolution : 1024 X 768 Functions : Multi display Function by DP MST Hub/Supported Standard HDMI,DVI,DP by each Cable Customer
	Customer Display	VFD Type (Alphabet & Numeric,20 Characters X 2 Lines)
	Card Reader	Smart Card Reader : ISO/IEC7816 EMV Level 1 Magnetic Strip Reader : ISO 7811 ID-1 All Tracks *Interface: USB(HID) and RS232C(COM6)
	Dallas Reader	Dallas reader(i- button): 6 Characters/Prefix and Suffix *Interface: USB(HID) and RS232C(COM6)
Physical Dimension	Dimension(WXDXH mm)	362mm X 237mm X 333mm
	Weight	5.3kg
Environment	Power Supply	DC 12V/5A (AC 100V~240V,60 W)
	Temperature	Operating: 0~50°C at 10% to 90% Humidity
	Certifications	CE,CB,FCC,KC

For trade enquiries contact

☎ 7550009339 / 9840460675 | ✉ sales-support@tvs-e.in

📘 /TVSElectronics 🌐 /tvs-electronics 📷 /tvselectronics